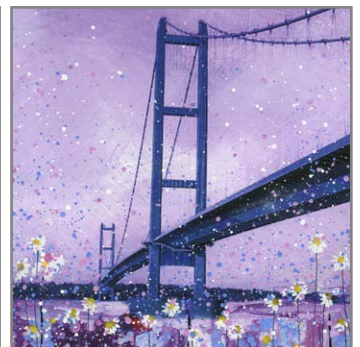
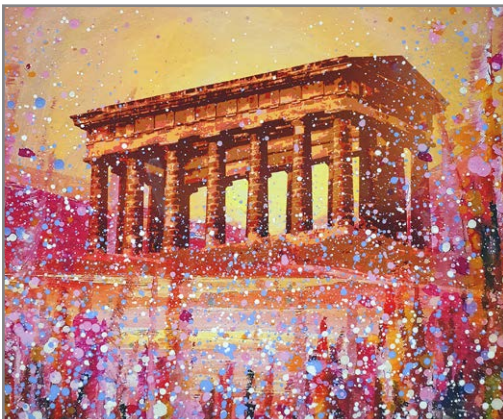
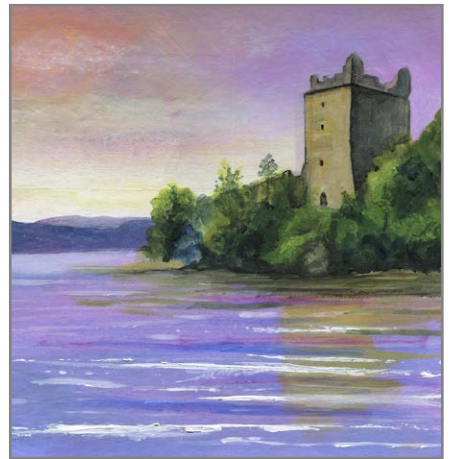


Emily Ward Art

Gifts, Greetings Cards and Postcards



About Emily Ward Art

It's been a journey.

Following my breast cancer diagnosis in 2010, I returned to painting to help me focus on my recovery. I had previously enjoyed working in a Head of Art role empowering and teaching art to disadvantaged groups.

It was a long recovery and with three little children, my rediscovered passion for painting helped me overturn my fears and anxieties and inspired me to create my business Emily Ward Art.

Over the last few years and with the help of the family 'firm' - my three (much bigger) kids I have expanded Emily Ward Art nationally. I have steadily developed and increased my business. My art portfolio continues to expand, from painting local scenes across the North East to now painting landmarks throughout the United Kingdom.

Having enjoyed great feedback from both trade customers and the general public, I now have a range of my products and artwork stocked in gift shops across the country and USA.

I like to pride myself on my approachable manner and enthusiasm. This ensures that my team and I can provide great customer service to both trade and the public whilst always maintaining that personal touch.

I choose to produce my gift range in the UK, using environmentally sound materials. I also support a huge number of charities in a variety of ways.

Emily Ward BA (HONS) Art and Design



How to order



Apply for a trade account online at www.emilywardarttrade.com



Email your order to info@emilywardart.com



By Phone 07956343374



Make an appointment with your local sales agent. Contact us for details.

Terms and Conditions

- Credit accounts are run on 28 day term
- Free delivery for all orders over £125
- Delivery is to a UK address only
- Orders will be delivered 5 - 15 working days after order is placed
- £100 minimum order for collections

Bespoke Designs

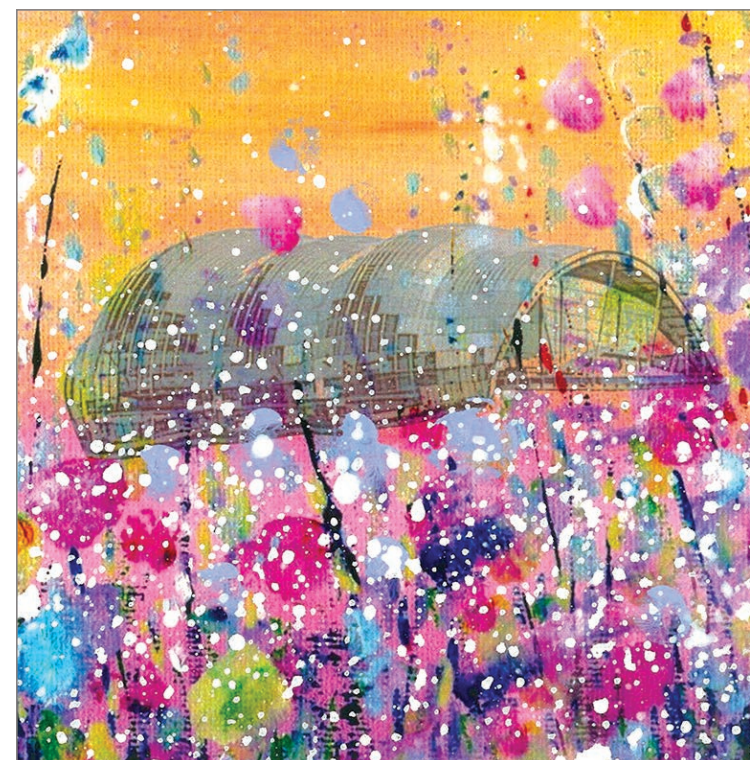
We are now offering a unique new service where you, the customer, can request a local landscape specific to your own local region. Customers have seen sales rocket when they have introduced a new bespoke design to their gift and greetings card range.

We have recently created a bespoke image for The Sage, Gateshead, which has been a great success. This is what Heather Dufferwiel, the Retail Buyer, has to say about her experience of working with Emily Ward Art's bespoke service.

Artwork and set up costs are free for orders over £250.



Emily approached us about creating a bespoke image of The Sage, Gateshead. We jumped at the chance. After a brief consultation, Emily produced an image which was perfect for The Sage and our customers. As soon as I saw the picture I just knew it would sell well in our gift shop. Emily's range has always been very popular but the introduction of our bespoke image has seen a significant increase in sales. So much so we asked Emily to design a bespoke Christmas card.



How to order bespoke designs

If you would like more information about our bespoke service contact info@emilywardart.com or ring Emily for an informal chat about your ideas. Alternatively make an appointment with your local sales agent.

Products



Framed Ceramic

A beautiful glossy ceramic tile presented in a deep edged frame. Each tile is hand finished.

Black or white frame available.

Size 25x25cm



Tile with Easel

Vibrant Ceramic Tile presented on a wooden easel wrapped in a cellophane bag

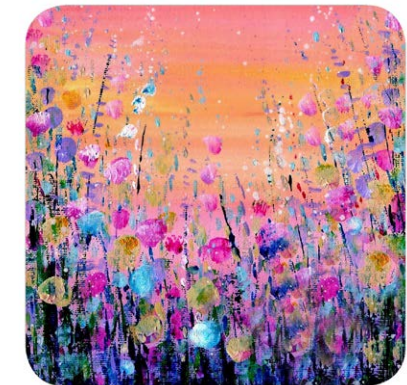
Size 15cm x 10cm including wooden easel



Postcards

Beautiful postcards printed on luxurious 400g card

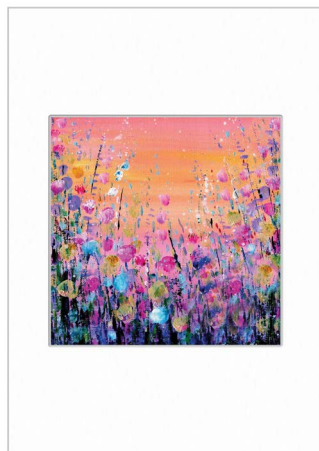
**Size 105 x 148mm
A6 size**



Coasters

Good quality, high end square coasters printed on MDF wood.

**Size 89 x 89mm
Thickness 4mm**



Prints

Mini prints are signed and titled by the artist and presented in an Antique white mount and cellophane bag

**Size with mount
21x29.7cm
A4 Size Portrait**



Greetings Cards

A luxurious blank 350g square greetings card, with quality white envelope, presented in a cellophane bag

Size 15x15cm

Flowers and Woods Designs



1FW Bluebell Woods



2FW. Going Forward



3FW Flowers Orange



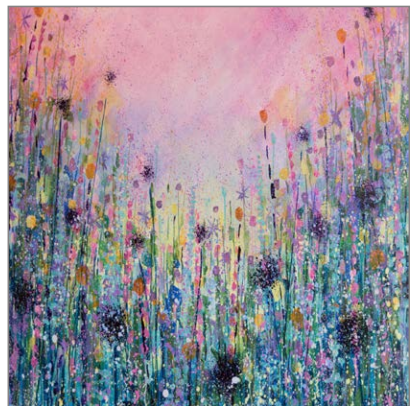
13FW Autumn Sunrise



14.FW Here comes Summer



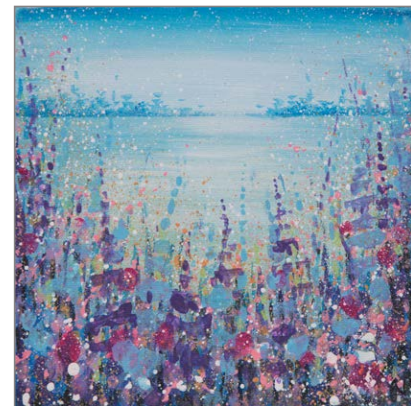
15FW Moonlight on the Daisies



4FW Flowers Meadow



5FW Moonlight on Mountains



6FW Special Place



16FW Morning Glory



17FW Over the Hill



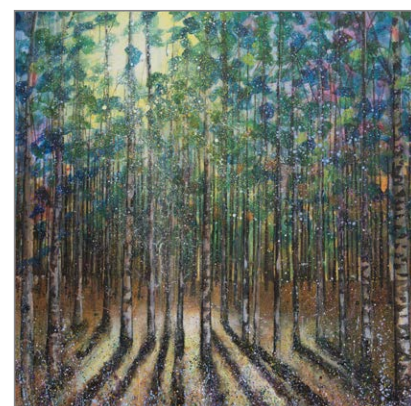
18FW Pretty Flowers



7FW Sunflowers



8FW Sunflowers at Sunset



9FW Lees Trees



19FW Winter wonderland



10FW Poppies



11FW Poppies at Sunset



12FW Flowers Blue



20FW Purple Mountains



Love Designs

Newcastle and Gateshead Designs



1L Love Purple



2L Love Flowers



3L Love Gold



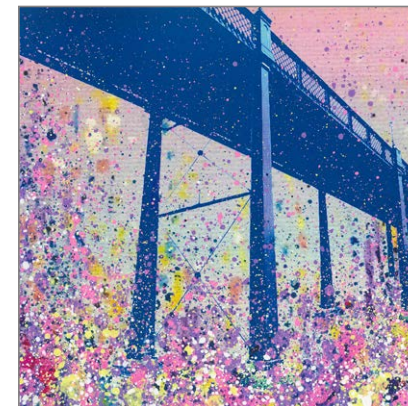
1N&G Angel of the North



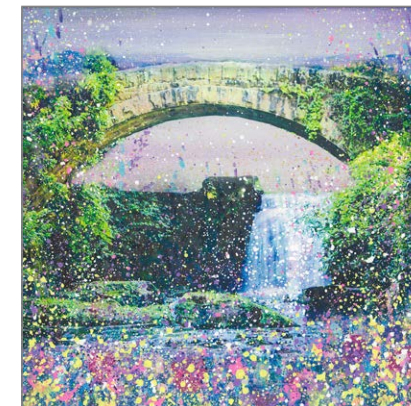
2N&G Angel of the North Flowers



3N&G Angel of the North Poppies



4N&G Armstrong Bridge



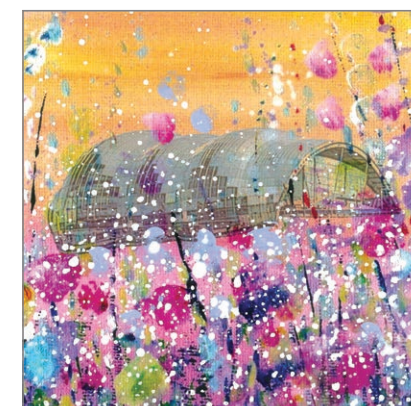
5N&G Jesmond Dene



6N&G The Baltic



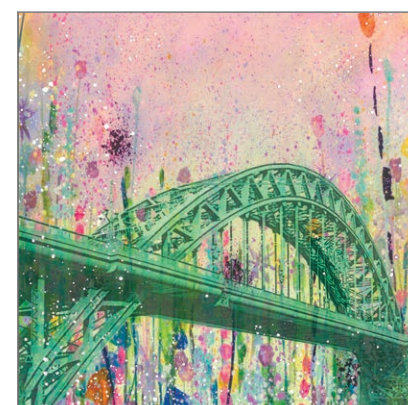
7N&G The Diamond Ponteland



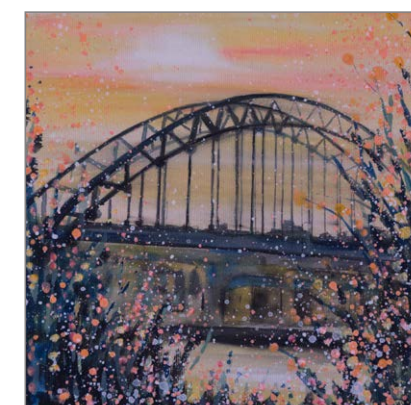
8N&G The Sage



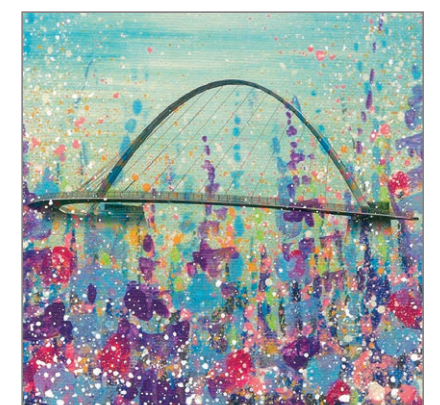
9N&G St James Park



10N&G Tyne Bridge Flowers



11N&G Tyne Bridge



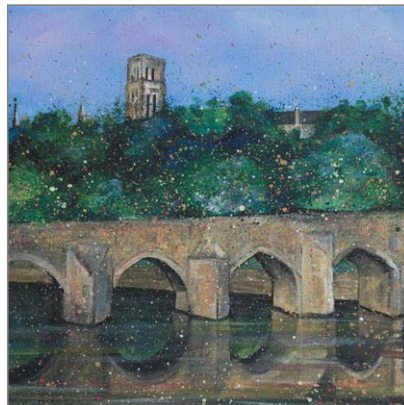
12N&G Millennium Bridge



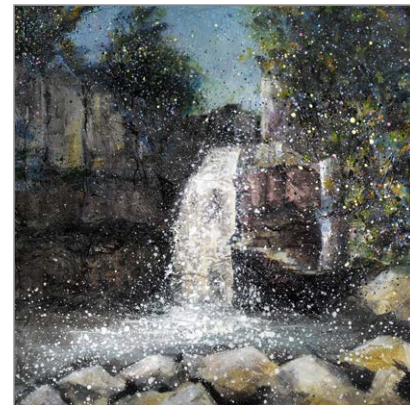
Durham Designs



1D Durham Cathedral



2D Elvet Bridge



3D High Force

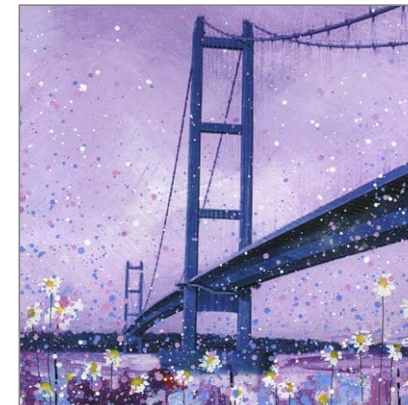
Middlesbrough Designs



1M Transporter Bridge



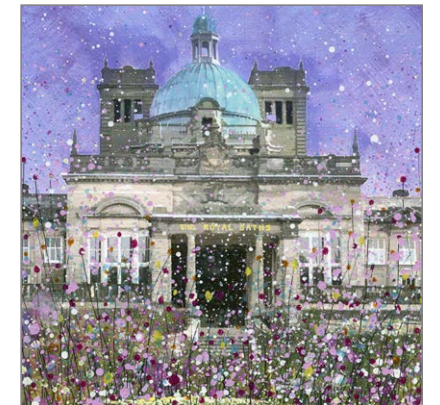
Yorkshire & Humberside Designs



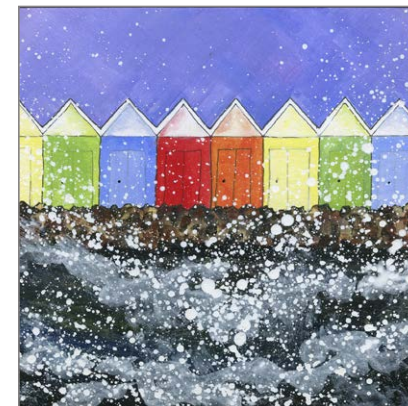
1Y&H Humber Bridge



2Y&H Ilkley-Moor Yorkshire



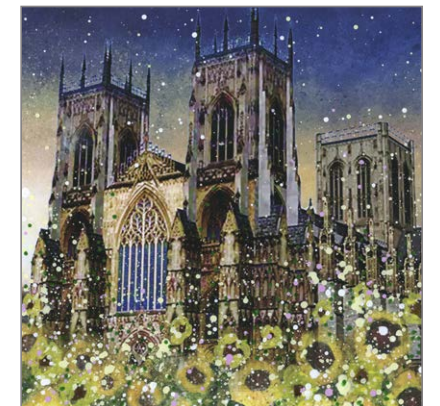
3Y&H Harrogate Baths



4Y&H Beach Huts Scarborough



5Y&H Whitby Abbey



6Y&H York Minster



Lake District & Lancaster Designs

Scotland Designs



1LD&L Ashton Memorial



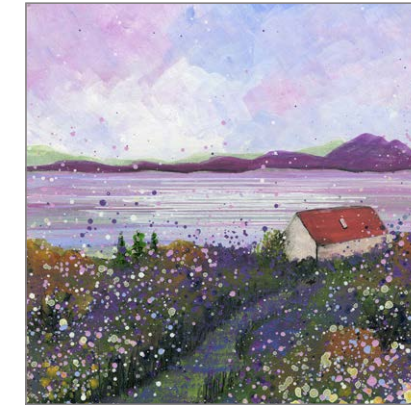
2LD&L Buttermere



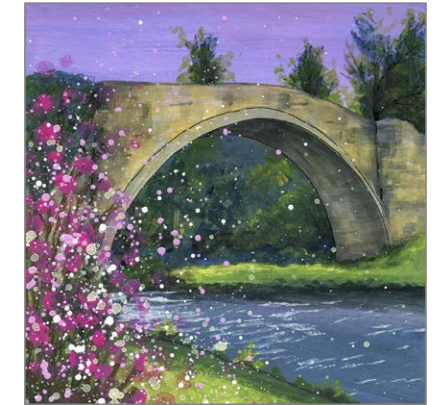
3LD&L Grasmere



1S Ben Nevis



2S Bothy View Highlands



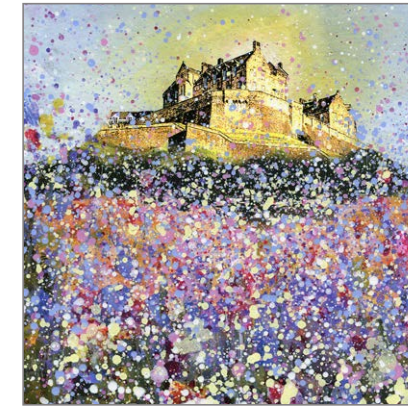
3S Brig O' Doon



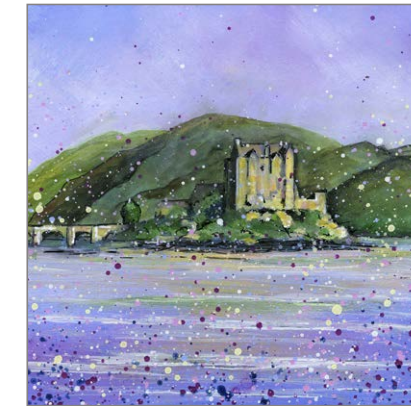
4LD&L Ullswater



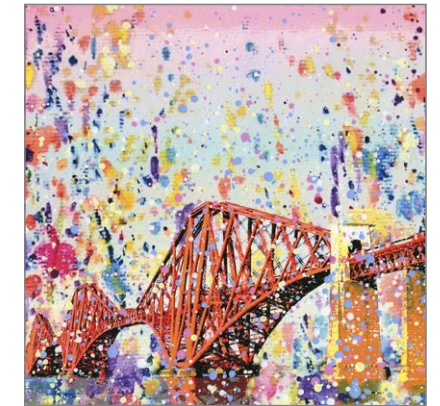
5LD&L Windermere



4S Edinburgh Castle



5S Eilean Donan



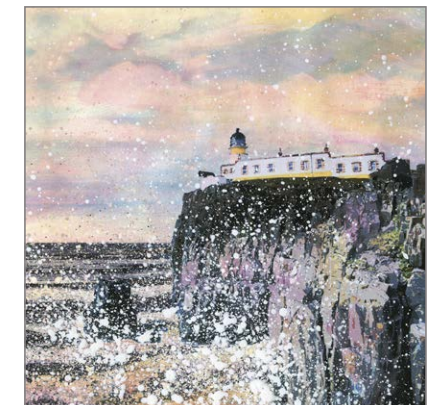
6S Forth Rail Bridge



7S George Square



8S Loch Lomond



9S Neist Point Lighthouse



10S The Kelpies



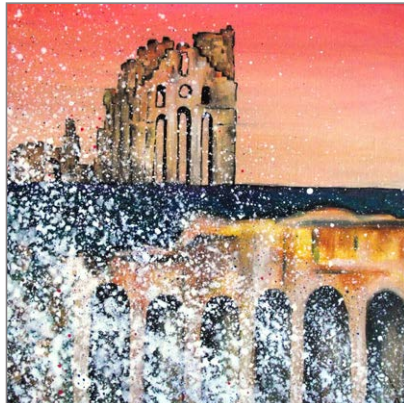
11S Urquhart Castle



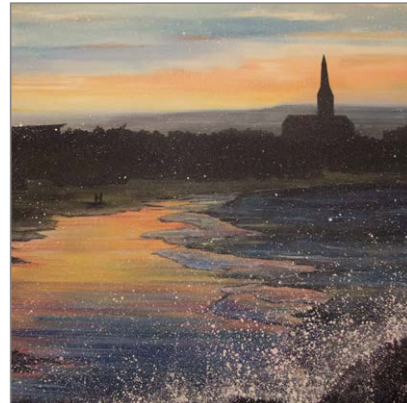
North Tyneside Designs



1NT Cullercoats Harbour



2NT Tynemouth Priory



3NT Longsands Tynemouth



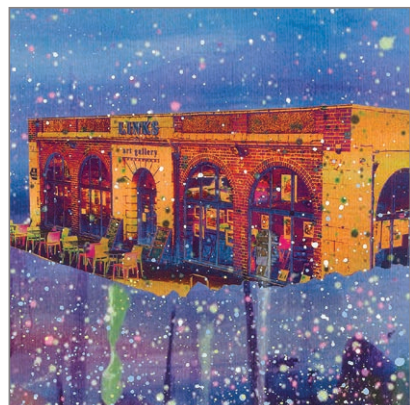
4NT Lowlights North Shields



5NT St Mary's Lighthouse Blue



6NT St Mary's Lighthouse



7NT Links Art Gallery



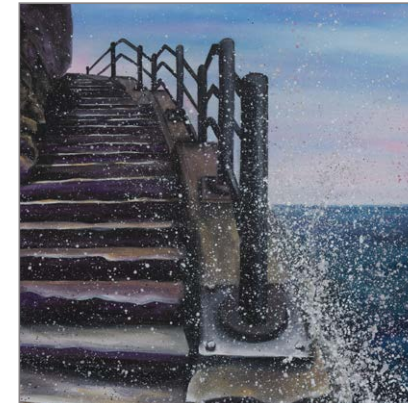
8NT Spanish City



9NT Tynemouth Pier



South Tyneside Designs



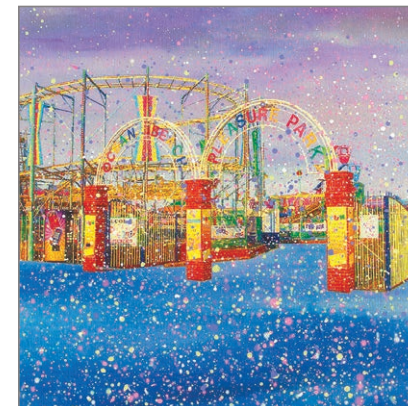
1ST Cat and Dog Stairs



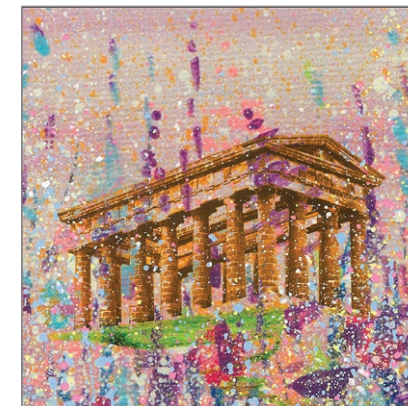
2ST The Herd Groyne



3ST Marsden Rock



4ST Ocean Park Beach



5ST Penshaw Monument



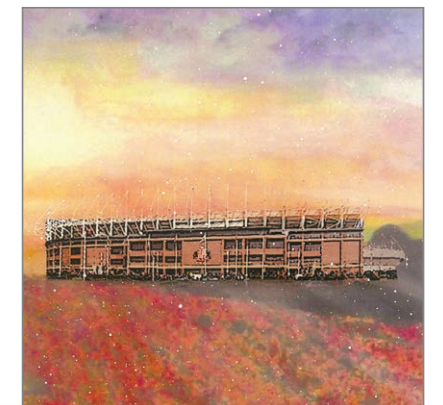
6ST Souter Light House



7ST Tommy



8ST Penshaw at Sunset



9ST Stadium of Light



10ST Frem on the Tyne



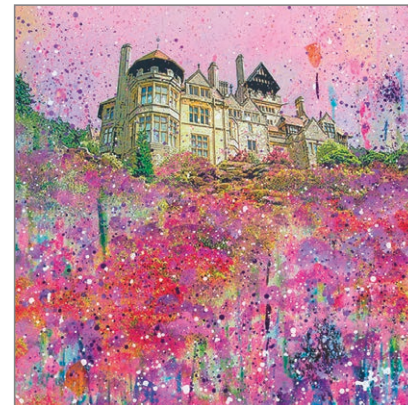
Northumberland Designs



1N Alnwick Castle



2N Bamburgh Castle Flowers



3N Cragside



13N Sycamore Gap Autumn



14N Sycamore Gap winter



15N Sycamore Gap Snow



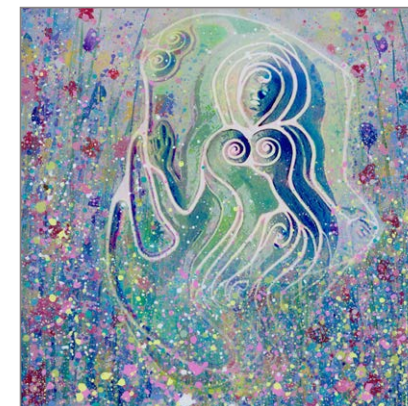
4N Blyth Huts in the Sunshine



5N Belsay Hall



6N Blyth Beach Huts



16N Northumberlandia



17N Farne Islands



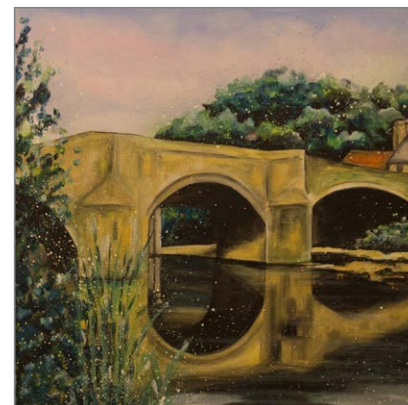
18N Inner Farne



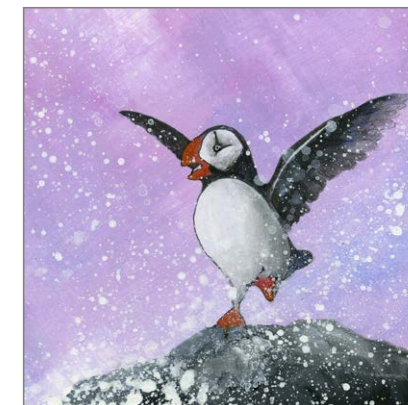
7N Dunstanburgh Castle



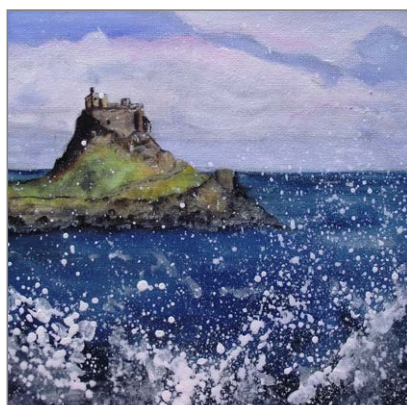
8N Warkworth Castle



9N Felton Bridge



19N Northumberland Puffin



10N Holy Island



11N Lindisfarne Priory



12N Sycamore Gap Spring



See what customers are saying

Why not let me design that extra special bespoke print and gift to sell in your shop? Your design will be unique to your area and customers.

Working with your suggestions I will design and create an image of an area of local interest to you. My style is unique and like no other artist. I am based in the North East of England but I cover the whole of the UK.

Businesses that I have previously worked with and designed bespoke products for have seen an increase in sales. Below are just a few testimonials.

"It was an absolute pleasure working with Emily. She has a mind like no other, full of creative ideas for gifts and paintings. After a quick chat with Emily she created a bespoke design for my shop in Tynemouth. I wanted an image which represented Tynemouth and its stunning beaches. She designed an image which perfectly illustrates our famous Tynemouth Longsands beach against a bright orange sunset."

This image of Tynemouth Longsands and Emily's Flowers and Woods collection are by far the fastest selling gift products in my shop."

Debra Munday, Owner, To the Moon and Back, Tynemouth

"We have worked with Emily Ward Art for over 5 years. Emily's unique images printed on good quality products have been our best sellers. Everyone loves her work. Emily's wide variety of images has attracted customers throughout the North East and further a field."

Our busy shop based in the Metro Center, Gateshead, specialises in North East local art, so Emily's greetings cards range, ceramic tiles and prints fitted in perfectly."

Dawn Kentish, Manager, Hand Picked Metro Center, Gateshead.

"Emily's Art work is one of our best sellers here at the Links Art Gallery in Whitley Bay. I wanted a bespoke piece of art to represent the gallery. After a brief conversation with Emily she created a beautiful image of the Links ."

Emily offered me the opportunity to have the image printed onto a wide range of products including greeting cards, framed tiles, tiles with easels, postcards and magnets which she replenishes very quickly as they sell so well."

Loredana Montalbano, Manager, Links Art Gallery, Whitley Bay

"Our shop sells a selection of Emily's designs and products. Emily's artwork has always proven to be a good seller over the last couple of years that we have worked together. They are very popular with our customers, who buy for themselves or as gifts for others."

Emily is very friendly and will happily talk through ideas for new products and pictures. Our deliveries always come on time and are often delivered personally by Emily."

Gary, Owner, Whickham Cards, Whickham





Emily Ward Art

07956 343 374

www.emilywardarttrade.com

info@emilywardart.com

VAT No. 403 7691 01